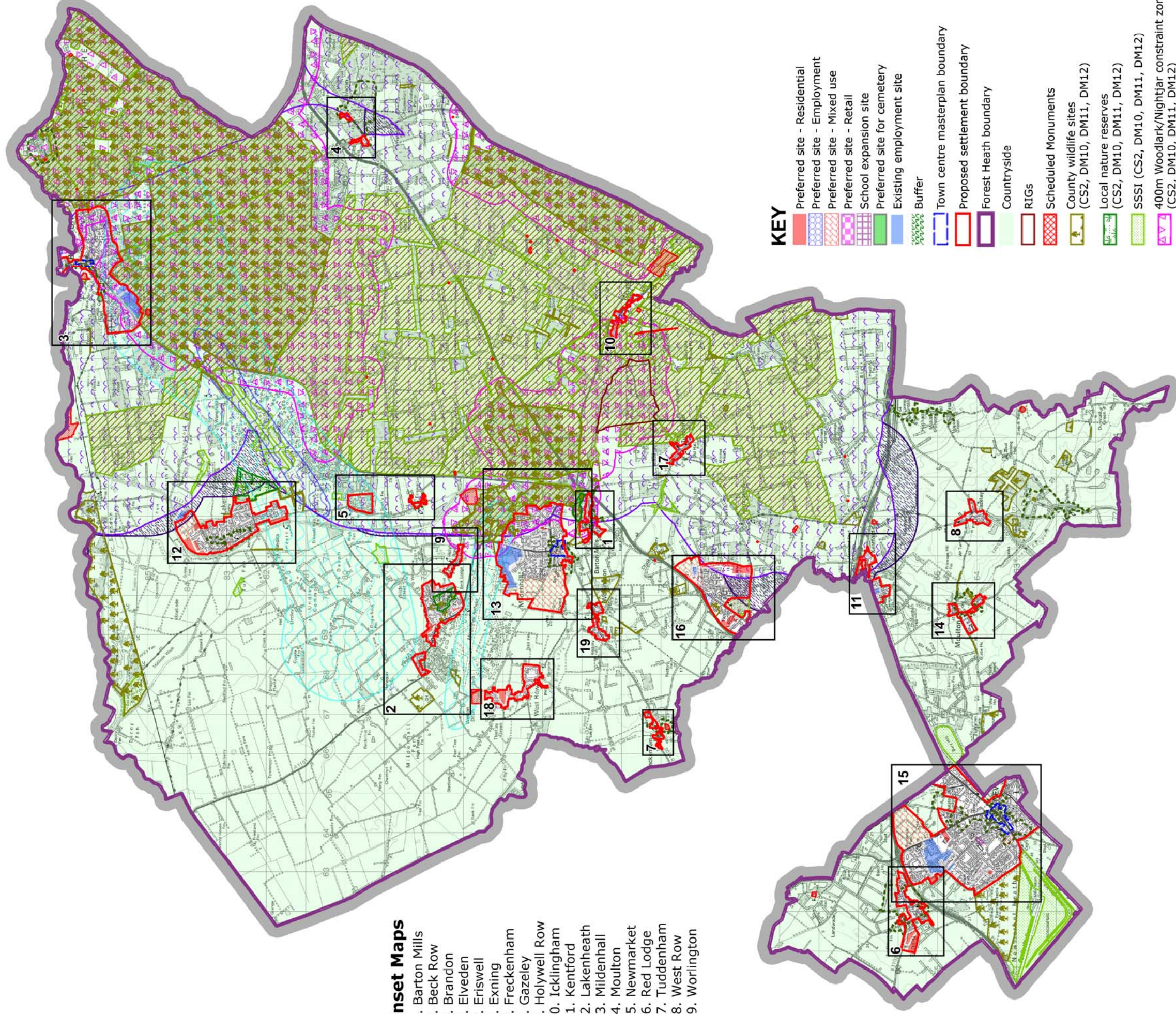


Local Plan Preferred Options Policies Map

April 2016



Inset Maps

1. Barton Mills
2. Beck Row
3. Brandon
4. Elveden
5. Eriswell
6. Exning
7. Freckenham
8. Gazeley
9. Holywell Row
10. Icklingham
11. Kentford
12. Lakenheath
13. Mildenhall
14. Moulton
15. Newmarket
16. Red Lodge
17. Tuddenham
18. West Row
19. Worlington

KEY

- Preferred site - Residential
- Preferred site - Employment
- Preferred site - Mixed use
- Preferred site - Retail
- School expansion site
- Preferred site for cemetery
- Existing employment site
- Buffer
- Town centre masterplan boundary
- Proposed settlement boundary
- Forest Heath boundary
- Countryside
- RIGs
- Scheduled Monuments
- County wildlife sites (CS2, DM10, DM11, DM12)
- Local nature reserves (CS2, DM10, DM11, DM12)
- SSSI (CS2, DM10, DM11, DM12)
- 400m Woodlark/Nightjar constraint zone (CS2, DM10, DM11, DM12)
- 1500m Stone Curlew constraint zone (CS2, DM10, DM11, DM12)
- 1500m Stone Curlew nesting constraint zone (CS2, DM10, DM11, DM12)
- Special areas of conservation (CS2, DM10, DM11, DM12)
- Special protection areas (CS2, DM10, DM11, DM12)
- Conservation area (DM17)
- MOD Soundproofing 70db
- MOD Soundproofing 83db

